

- Primary current: 5...4000A
- Secondary current: 5A
- Solid and split-core types
- Instrument and accuracy versions
- Wound primary CT for low currents
- Busbar versions.

### Current transformers

	<b>SEC. - PAGE</b>
Wound primary type .....	29 - 2
Solid-core .....	29 - 2
Accuracy solid-core .....	29 - 4
Current transformer kit with UTF certificates .....	29 - 5
Compact prewired split-core .....	29 - 6
Split-core .....	29 - 7

<b>Dimensions</b> .....	<b>29 - 8</b>
-------------------------	---------------



Page 29-2

**WOUND PRIMARY CURRENT TRANSFORMERS**

- Primary current 5...30A
- Secondary current 5A
- Screw terminals.



Page 29-2

**SOLID-CORE CURRENT TRANSFORMERS**

- Primary current 40...4000A
- Secondary current 5A
- Busbar versions.



Page 29-4

**ACCURACY SOLID-CORE CURRENT TRANSFORMERS**

- Primary current 60...3000A
- Secondary current 5A
- Accuracy class 0.5s.



Page 29-5

**CURRENT TRANSFORMER KIT WITH UTF CERTIFICATES**

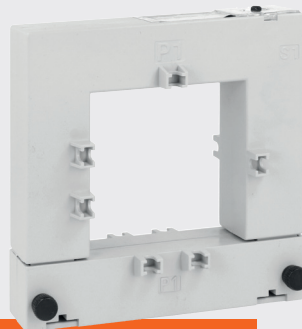
- Primary current 60...3000A
- Secondary current 5A
- Kit consisting of 3 transformers and related UTF certificates (Finance Technical Office).



Page 29-6

**COMPACT PREWIRED SPLIT-CORE CURRENT TRANSFORMERS**

- Primary current 100...600A
- Secondary current 5A
- Compact dimensions
- Cable supplied as standard, length 2m.



Page 29-7

**SPLIT-CORE CURRENT TRANSFORMERS**

- Primary current 100...4000A
- Secondary current 5A.

## Wound primary type



DM0TW...

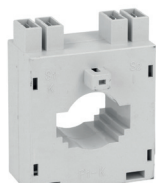
Order code	Primary current I <sub>pn</sub>	Burden			Qty per pkg	Wt [kg]
		cl. 0.5 [VA]	cl. 1 [VA]	cl. 3 [VA]		
	/5 [A]	[VA]	[VA]	[VA]	n°	[kg]
Screw primary terminals.						
DM0TW0005	5	1.5	2.5	—	1	0.525
DM0TW0010	10	1.5	2.5	—	1	0.525
DM0TW0020	20	1.5	2.5	—	1	0.525
DM0TW0030	30	1.5	2.5	—	1	0.525

## Solid-core



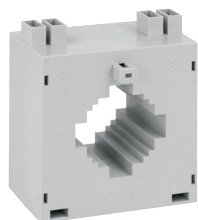
DM0T...

Order code	Primary current I <sub>pn</sub>	Burden			Qty per pkg	Wt [kg]
		cl. 0.5 [VA]	cl. 1 [VA]	cl. 3 [VA]		
	/5 [A]	[VA]	[VA]	[VA]	n°	[kg]
For Ø22mm/0.87" cable.						
DM0T0040	40	—	—	1.25	1	0.200
DM0T0050	50	—	1.25	—	1	0.200
DM0T0060	60	—	1.5	—	1	0.200
DM0T0080	80	—	1.5	—	1	0.200
DM0T0100	100	—	1.5	—	1	0.200
DM0T0150	150	—	2	—	1	0.200



DM2T...

Order code	Primary current I <sub>pn</sub>	Burden		Qty per pkg.	Wt [kg]
		cl. 0.5 [VA]	cl. 1 [VA]		
	/5 [A]	[VA]	[VA]	n°	[kg]
For Ø23mm/0.90" cable. For 30x10mm/1.18x0.39", 25x12.5mm/0.98x0.49", 20x15mm/0.79x0.59" busbars, width 52mm/2.05".					
DM2T0100	100	—	1	1	0.130
DM2T0150	150	—	1.5	1	0.130
DM2T0200	200	—	2	1	0.130
DM2T0250	250	—	2.5	1	0.130
DM2T0300	300	1.5	3	1	0.130
DM2T0400	400	2	3	1	0.130



DM3T...

Order code	Primary current I <sub>pn</sub>	Burden [VA]	cl. 1 [VA]	Qty per pkg.	Wt [kg]
For Ø30mm/1.18" cable. For 40x10mm/1.57x0.39", 30x20mm/1.18x0.79", 25x25mm/0.98x0.98" busbars, width 71mm/2.79".					
DM3T0200	200	—	5	1	0.260
DM3T0250	250	—	5	1	0.260
DM3T0300	300	2.5	5	1	0.260
DM3T0400	400	2.5	5	1	0.260
DM3T0500	500	2.5	5	1	0.260
DM3T0600	600	5	10	1	0.260
DM3T0800	800	5	10	1	0.260



DM33...

Order code	Primary current I <sub>pn</sub>	Burden [VA]	cl. 1 [VA]	Qty per pkg.	Wt [kg]
For Ø44mm/1.73" cable. For 51x41mm/2.01x1.61", 61x31mm/2.40x1.22" busbars, width 95mm/3.74".					
DM33T0800	800	5	10	1	0.476
DM33T1000	1000	5	15	1	0.476
DM33T1200	1200	5	15	1	0.476



DM34...

Order code	Primary current I <sub>pn</sub>	Burden [VA]	cl. 1 [VA]	Qty per pkg.	Wt [kg]
For Ø44mm/1.73" cable. For 69x10mm/2.72x0.39", 50x30mm/1.97x1.18" busbars, width 95mm/3.74".					
DM34T1500	1500	5	15	1	0.476
DM34T1600	1600	5	15	1	0.476

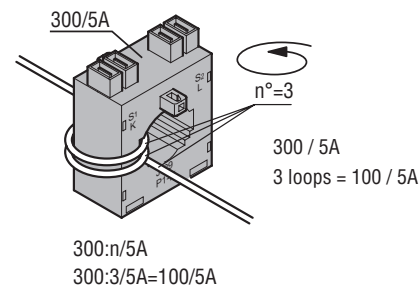
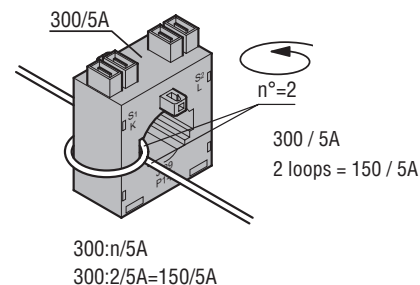
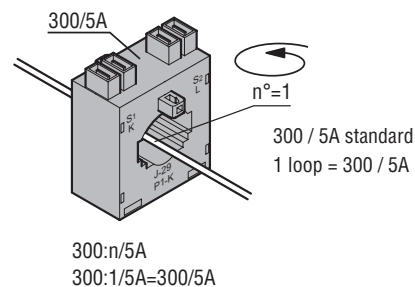
## General characteristics

The current transformers (CTs) in the DM series are installed in an electrical system to reduce the line current to a secondary value of 5A compatible with the ammeter inputs of the digital multimeters or protection relays.

DM0TW... are instrument transformers in class 1/0.5 wound primary type and are normally used for low primary current values starting from 5A.

DM... are instrument transformers in class 1/0.5 without a primary winding and are normally used for high primary current values starting from 40A.

The number of loops of the primary cable does not modify the accuracy but converts the primary current value proportional to secondary current.



## Operational characteristics

- Operating frequency: 50...60Hz
- Secondary output current: 5A
- Overload withstand: 120% I<sub>pn</sub>
- IEC rated insulation voltage U<sub>i</sub>: 720V
- IEC rated short-time thermal current I<sub>th</sub>: 40...60 I<sub>pn</sub> for 1 second
- IEC rated dynamic current I<sub>dyn</sub>: 2.5 I<sub>th</sub> for 1 second
- Insulation (dry type): Class E
- Terminals:
  - Faston for DM2T... and DM3T... types
  - Screw for DM0T..., DM33T and DN34T... types
- Sealable terminal covers for DM33T..., DM34T... types
- Fixing on 35mm DIN rail (IEC/EN/BS 60715) or by screws (fixing elements standard supplied with the product)
- EN degree of protection: IP30
- Ambient conditions:
  - Operating temperature: -25...+50°C
  - Storage temperature: -40...+80°C
  - Relative humidity, non condensing: 90%.

## Certifications and compliance

Certifications obtained: EAC.  
Compliant with standards: IEC/EN/BS 61869-2,  
IEC/EN/BS 61869-1.

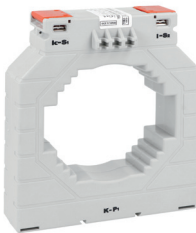
## Solid-core



DM35T...



DM37...



DM4T...

Order code	Primary current I <sub>pn</sub>	Burden		Qty per pkg	Wt
		cl. 0.5	cl. 1		
	/5 [A]	[VA]	[VA]	n°	[kg]

For Ø66mm/2.60" cable.  
For 80x12,5mm/3.15"x0.49", 60x30mm/2.36x1.18", 50x50mm/1.97x1.97" busbars, width 105mm/4.13".

DM35T0400	400	—	5	1	0.460
DM35T0500	500	5	5	1	0.460
DM35T0600	600	5	10	1	0.460
DM35T0800	800	10	15	1	0.460
DM35T1000	1000	15	20	1	0.460
DM35T1250	1250	15	20	1	0.460

For 101x56mm/3.98x2.20" busbars, width 128mm/5.04".

DM37T2000	2000	10	15	1	1.000
DM37T2250	2250	10	15	1	1.000
DM37T2500	2500	10	15	1	1.000
DM37T3000	3000	10	15	1	1.000

For Ø86mm/3.38" cable.  
For 100x30mm/3.94x1.18", 80x50mm/3.15x1.97", 70x60mm/2.75x2.36" busbars, width 140mm/5.51".

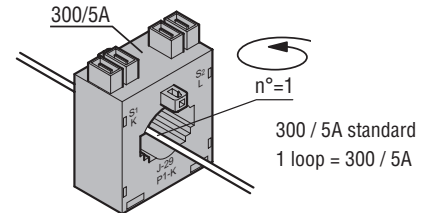
DM4T1000	1000	10	20	1	0.700
DM4T1250	1250	15	30	1	0.760
DM4T1500	1500	20	30	1	0.760
DM4T1600	1600	20	30	1	0.800
DM4T2000	2000	30	45	1	0.840
DM4T2500	2500	35	45	1	0.900
DM4T3000	3000	45	45	1	0.900
DM4T3500	3500	50	50	1	0.900
DM4T4000	4000	50	50	1	0.900

### General characteristics

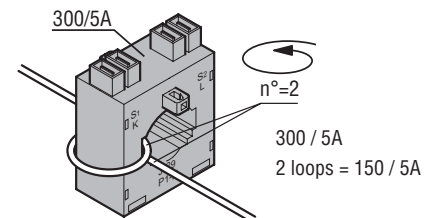
The current transformers (CTs) in the DM series are installed in an electrical system to reduce the line current to a secondary value of 5A compatible with the ammeter inputs of the digital multimeters or protection relays.

DM... are instrument transformers in class 1/0.5 without a primary winding and are normally used for high primary current values starting from 50A.

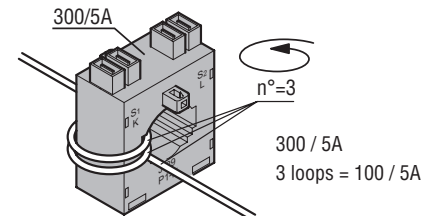
The number of loops of the primary cable does not modify the accuracy but converts the primary current value proportional to secondary current.



300:n/5A  
300:1/5A=300/5A



300:n/5A  
300:2/5A=150/5A



300:n/5A  
300:3/5A=100/5A

### Operational characteristics

- Operating frequency: 50...60Hz
- Secondary output current: 5A
- Overload withstand: 120% I<sub>pn</sub>
- IEC rated insulation voltage U<sub>i</sub>: 720V
- IEC rated short-time thermal current I<sub>th</sub>: 40...60 I<sub>pn</sub> for 1 second
- IEC rated dynamic current I<sub>dyn</sub>: 2.5 I<sub>th</sub> for 1 second
- Insulation (dry type): Class E
- Terminals:
  - Screw for DM35T..., DM37T... and DM4T... types
  - Sealable terminal covers only for DM35T... and DM4T... types
- Fixing on 35mm DIN rail (IEC/EN/BS 60715) or by screws (fixing elements standard supplied with the product)
- EN degree of protection: IP30
- Ambient conditions:
  - Operating temperature: -25...+50°C
  - Storage temperature: -40...+80°C
  - Relative humidity, non condensing: 90%.

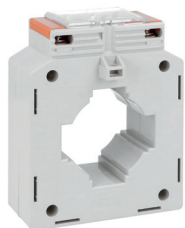
### Certifications and compliance

Certifications obtained: EAC.  
Compliant with standards: IEC/EN/BS 61869-2, IEC/EN/BS 61869-1.

## Accuracy solid-core



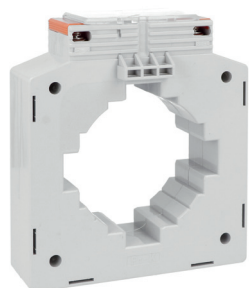
DM1TP...



DM3TP...



DM4TP...



DM5TP...

Version with UTF certificates.  
See page 29-5.

Order code	Primary current I <sub>pn</sub>	Burden		Qty over pkg	Weight [kg]
		cl. 0.5s [VA]	cl. 0.5 [VA]		

For Ø28mm/1.10" cable.  
For 30x10mm/1.18x0.39", 25x12.5mm/0.98x0.49", 20x20mm/0.79x0.79" busbar, width: 75mm/2.95".

DM1TP0060	60	1.5	1.5	1	0.560
DM1TP0080	80	2.5	2.5	1	0.580
DM1TP0100	100	2.5	3.75	1	0.480
DM1TP0150	150	2.5	3.75	1	0.480
DM1TP0200	200	2.5	3.75	1	0.480
DM1TP0250	250	2.5	5	1	0.480
DM1TP0300	300	2.5	5	1	0.480
DM1TP0400	400	5	5	1	0.480
DM1TP0500	500	5	5	1	0.480

For Ø28mm/1.10" cable.  
For 30x10mm/1.18x0.39", 25x20mm/0.98x0.79", 20x20mm/0.79x0.79" busbar, width: 75mm/2.95".

DM1TP0600	600	2.5	5	1	0.480
-----------	-----	-----	---	---	-------

For Ø52mm/2.04" cable.  
For 60x20mm/2.36x0.79", 50x25mm/1.97x0.98" busbar, width: 101mm/3.98".

DM3TP0500	500	3.75	5	1	0.700
DM3TP0600	600	5	10	1	0.700
DM3TP0800	800	5	10	1	0.700
DM3TP1000	1000	5	10	1	0.700

For Ø80mm/3.15" cable.  
For 82x30mm/3.23x1.18" busbar, width: 128mm/5.04".

DM4TP1200	1200	-	10	1	0.800
-----------	------	---	----	---	-------

For Ø85.5mm/3.37" cable.  
For 100x20mm/3.94x0.79", 80x45mm/3.15x1.77" busbar, width: 144mm/5.67".

DM5TP1000	1000	5	10	1	0.900
DM5TP1250	1250	7.5	10	1	0.900
DM5TP1600	1600	7.5	10	1	0.900
DM5TP2000	2000	10	15	1	0.900
DM5TP2500	2500	10	15	1	0.900
DM5TP3000	3000	10	15	1	0.900

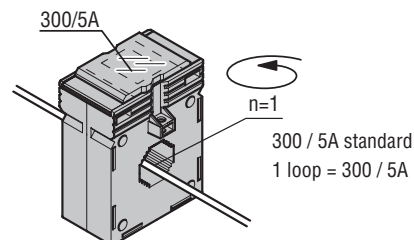
Consult Technical support to inquiry about versions with Italian UTF certificates.

### General characteristics

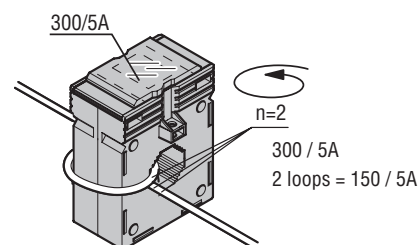
The DM...TP type accuracy current transformers (CTs) are installed in an electrical system to reduce the line current to a secondary value of 5A compatible with the ammeter inputs of the digital multimeters or protection relays.

DM...TP are accuracy current transformers in class 0.5s without a primary winding and are normally used for high primary current values starting from 60A.

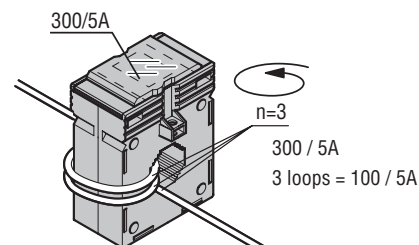
The number of loops of the primary cable does not modify the accuracy but converts the primary current value proportional to secondary current.



300:n/5A  
300:1/5A=300/5A



300:n/5A  
300:3/5A=100/5A



300:n/5A  
300:3/5A=100/5A

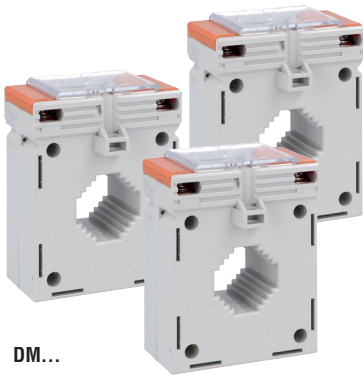
### Operational characteristics

- Operating frequency: 50...60Hz
- Secondary output current: 5A
- Overload withstand: 120% I<sub>pn</sub>
- IEC rated insulation voltage U<sub>i</sub>: 720V
- IEC rated short-time thermal current I<sub>th</sub>: 40...60 I<sub>pn</sub> for 1 second
- IEC rated dynamic current I<sub>dyn</sub>: 2.5 I<sub>th</sub> for 1 second
- Insulation (dry type): Class E
- Screw terminals
- Sealable terminal covers
- Fixing on 35mm DIN rail (IEC/EN/BS 60715) or by screws (fixing elements standard supplied with the product)
- EN degree of protection: IP30
- Ambient conditions:
  - Operating temperature: -25...+50°C
  - Storage temperature: -40...+80°C
  - Relative humidity, non condensing: 90%.

### Certifications and compliance

Certifications obtained: EAC.  
Compliant with standards: IEC/EN/BS 61869-2, IEC/EN/BS 61869-1.

**Current transformer kit with UTF certificates**



Order code	Description of CTs included	Qty per pkg n°	Wt [kg]
------------	-----------------------------	-------------------	------------

Kit comprising of three /5A and class 0.5s current transformers.

<b>DM1TP0060FKIT</b>	3 DM1TP0060, complete with UTF certificate	1	1.440
<b>DM1TP0080FKIT</b>	3 DM1TP0080, complete with UTF certificate	1	1.440
<b>DM1TP0100FKIT</b>	3 DM1TP0100, complete with UTF certificate	1	1.560
<b>DM1TP0150FKIT</b>	3 DM1TP0150, complete with UTF certificate	1	1.680
<b>DM1TP0200FKIT</b>	3 DM1TP0200, complete with UTF certificate	1	1.620
<b>DM1TP0250FKIT</b>	3 DM1TP0250, complete with UTF certificate	1	1.620
<b>DM1TP0300FKIT</b>	3 DM1TP0300, complete with UTF certificate	1	1.680
<b>DM1TP0400FKIT</b>	3 DM1TP0400, complete with UTF certificate	1	1.680
<b>DM1TP0600FKIT</b>	3 DM1TP0600, complete with UTF certificate	1	1.680
<b>DM3TP0500FKIT</b>	3 DM3TP0500, complete with UTF certificate	1	2.160
<b>DM3TP0600FKIT</b>	3 DM3TP0600, complete with UTF certificate	1	2.160
<b>DM3TP0800FKIT</b>	3 DM3TP0800, complete with UTF certificate	1	2.280
<b>DM4TP1200FKIT</b>	3 DM4TP1200, complete with UTF certificate	1	2.280
<b>DM5TP1000FKIT</b>	3 DM5TP1000, complete with UTF certificate	1	2.820
<b>DM5TP1250FKIT</b>	3 DM5TP1250, complete with UTF certificate	1	2.760
<b>DM5TP1600FKIT</b>	3 DM5TP1600, complete with UTF certificate	1	2.880
<b>DM5TP2000FKIT</b>	3 DM5TP2000, complete with UTF certificate	1	2.940
<b>DM5TP2500FKIT</b>	3 DM5TP2500, complete with UTF certificate	1	3.120
<b>DM5TP3000FKIT</b>	3 DM5TP3000, complete with UTF certificate	1	2.940

**General characteristics**

The UTF (Finance Technical Office) certification is required in Italy in case of applications where taxes have to be paid due to energy production (Italian regulations for plants >20kW). The certificates must be associated to the energy meter (MID version, see page 28-12 for selection) and to each single current transformer is needed.

The DM...TP type accuracy current transformers (CTs) can be provided in a kit version made by three CTs and relative UTF certificates.

If required, the fifth certificate relevant to the meter and current transformer combination can be supplied as well.

The DM...TP type accuracy current transformers (CTs) are installed in an electrical system to reduce the line current to a secondary value of 5A compatible with the ammeter inputs of the digital multimeters or protection relays.

DM...TP are accuracy current transformers in class 0.5s without a primary winding and are normally used for high primary current values starting from 60A.

The number of loops of the primary cable does not modify the accuracy but converts the primary current value proportional to secondary current (see page 29-4).

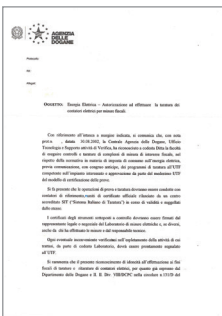
**Operational characteristics**

- Operating frequency: 50...60Hz
- Secondary output current: 5A
- Overload withstand: 120% I<sub>pn</sub>
- Rated insulation voltage U<sub>i</sub>: 720V
- Rated short time thermal current I<sub>th</sub>: 40-60I<sub>pn</sub> for 1 second
- Rated dynamic current I<sub>dyn</sub>: 2.5I<sub>th</sub> for 1 second
- Insulation (dry type): class E
- Screw fixing terminals
- Sealable terminal covers
- Fixing on 35mm DIN rail (IEC/EN/BS 60715) or by screws (fixing elements standard supplied with the product)
- EN degree of protection: IP30.
- Ambient conditions
  - Operating temperature: -25...+50°C
  - Storage temperature: -40...+80°C.
  - Relative humidity, non condensing: 90%.

**Compliance**

Compliant with standards: IEC/EN/BS 61869-2, IEC/EN/BS 61869-1.

**System certificate**



Order code	Description
------------	-------------

**DMCERTUTF** UTF system certificate

## Compact prewired split-core



DM1TMA...



DM2TMA...

Order code	Primary current I <sub>pn</sub>	Burden		Qty per pkg	Wt
		cl. 0.5	cl. 1		
	/5 [A]	[VA]	[VA]	n°	[kg]
24x24mm/0.94x0.94" hole. Cable supplied as standard, length 2m.					
<b>DM1TMA0100</b>	100	—	1.0	1	0.200
<b>DM1TMA0150</b>	150	—	1.0	1	0.200
<b>DM1TMA0200</b>	200	—	1.0	1	0.200
<b>DM1TMA0250</b>	250	—	1.0	1	0.200
36x38mm/1.42x1.50" hole. Cable supplied as standard, length 2m.					
<b>DM2TMA0250</b>	250	0.5	1.5	1	0.380
<b>DM2TMA0300</b>	300	0.5	1.5	1	0.380
<b>DM2TMA0400</b>	400	0.5	1.5	1	0.380
<b>DM2TMA0500</b>	500	0.5	1.5	1	0.380
<b>DM2TMA0600</b>	600	0.5	1.5	1	0.380

### General characteristics

The DM...TMA type current transformers (CTs) are installed in an electrical system to reduce the line current to a secondary value of 5A compatible with the ammeter inputs of the digital multimeters or protection relays.

DM...TMA are instrument transformers in class 1 without a primary winding and are normally used for high primary current values starting from 100A.

### Operational characteristics

- Operating frequency: 50...60Hz
- Secondary output current: 5A
- Overload withstand: 120% I<sub>pn</sub>
- IEC rated insulation voltage U<sub>i</sub>: 720V
- IEC rated short-time thermal current I<sub>th</sub>: 40...60 I<sub>pn</sub> for 1 second
- IEC rated dynamic current I<sub>dyn</sub>: 2.5 I<sub>th</sub> for 1 second
- Cable supplied as standard, length 2m.
- Insulation (dry type): Class E
- Ambient conditions:
  - Operating temperature: -25...+50°C
  - Storage temperature: -40...+80°C
  - Relative humidity, non condensing: 90%.

### Certifications and compliance

Certifications obtained: EAC.  
Compliant with standards: IEC/EN/BS 61869-2, IEC/EN/BS 61869-1.

## Split-core



DM1TA...



DM2TA...



DM3TA...



DM4TA...

Order code	Primary current I <sub>pn</sub>	Burden			Qty per pkg	Wt [kg]
		cl. 0.5 [VA]	cl. 1 [VA]	cl. 3 [VA]		

32x21mm/1.26x0.83" hole. Width: 89mm/3.50".

<b>DM0TA0100</b>	100	—	—	1	1	0.900
<b>DM0TA0150</b>	150	—	1	2.5	1	0.900
<b>DM0TA0200</b>	200	—	2.5	—	1	0.900

50x80mm/1.97x3.15" hole. Width: 114mm/4.89".

<b>DM1TA0250</b>	250	1	2		1	0.900
<b>DM1TA0300</b>	300	1.5	3		1	0.900
<b>DM1TA0400</b>	400	1.5	3		1	0.900
<b>DM1TA0500</b>	500	2.5	5		1	0.900
<b>DM1TA0600</b>	600	2.5	5		1	0.900
<b>DM1TA0800</b>	800	3	7.5		1	0.900
<b>DM1TA1000</b>	1000	5	10		1	0.900

Order code	Primary current I <sub>pn</sub>	Burden		Qty per pkg	Wt [kg]
		cl. 0.5 [VA]	cl. 1 [VA]		

80x80mm/3.15x3.15" hole. Width: 142mm/5.59".

<b>DM2TA0250</b>	250	1	2	1	1.050
<b>DM2TA0300</b>	300	1.5	3	1	1.050
<b>DM2TA0400</b>	400	1.5	3	1	1.050
<b>DM2TA0500</b>	500	2.5	5	1	1.050
<b>DM2TA0600</b>	600	2.5	5	1	1.050
<b>DM2TA0800</b>	800	3	7.5	1	1.050
<b>DM2TA1000</b>	1000	5	10	1	1.050
<b>DM2TA1250</b>	1250	—	15	1	1.050

80x120mm/3.15x4.72" hole. Width: 142mm/5.59".

<b>DM3TA0500</b>	500	—	4	1	1.250
<b>DM3TA0600</b>	600	—	5	1	1.250
<b>DM3TA0800</b>	800	3	7.5	1	1.250
<b>DM3TA1000</b>	1000	5	10	1	1.250
<b>DM3TA1250</b>	1250	7.5	15	1	1.250
<b>DM3TA1500</b>	1500	8	17	1	1.250
<b>DM3TA2000</b>	2000	—	17	1	1.250

80x160mm/3.15x6.30" hole. Width: 184mm/7.24".

<b>DM4TA2000</b>	2000	15	20	1	3.160
<b>DM4TA2500</b>	2500	15	20	1	3.340
<b>DM4TA3000</b>	3000	20	25	1	3.500
<b>DM4TA4000</b>	4000	20	25	1	3.760

### General characteristics

The DM...TA type current transformers (CTs) are installed in an electrical system to reduce the line current to a secondary value of 5A compatible with the ammeter inputs of the digital multimeters or protection relays.

DM...TA are instrument transformers in class 0.5/1 without a primary winding and are normally used for high primary current values starting from 250A.

### Operational characteristics

- Operating frequency: 50...60Hz
- Secondary output current: 5A
- Overload withstand: 120% I<sub>pn</sub>
- IEC rated insulation voltage U<sub>i</sub>: 720V
- IEC rated short-time thermal current I<sub>th</sub>: 40...60 I<sub>pn</sub> for 1 second
- IEC rated dynamic current I<sub>dyn</sub>: 2.5 I<sub>th</sub> for 1 second
- Insulation (dry type): Class E
- Screw terminals
- Sealable terminal covers
- Screw fixing (fixing elements standard supplied with the product)
- IEC degree of protection: IP30
- Ambient conditions:
  - Operating temperature: -25...+50°C
  - Storage temperature: -40...+80°C
  - Relative humidity, non condensing: 90%.

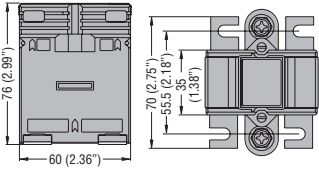
### Certifications and compliance

Certifications obtained: EAC.

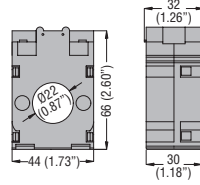
Compliant with standards: IEC/EN/BS 61869-2, IEC/EN/BS 61869-1.



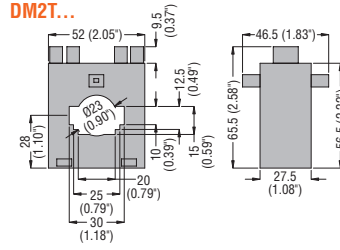
CURRENT TRANSFORMERS  
Wound primary **DM0TW...**



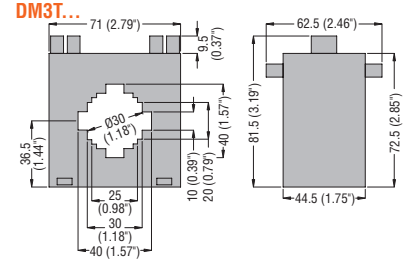
Solid core **DM0T...**



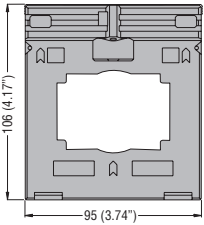
**DM2T...**



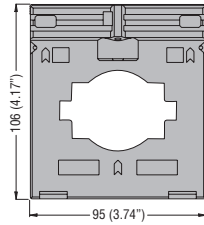
**DM3T...**



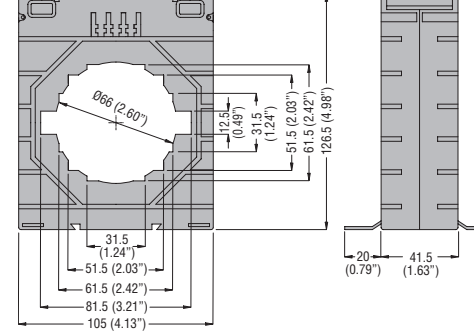
**DM33T...**



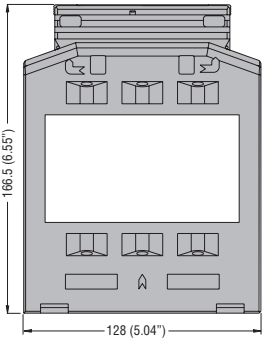
**DM34T...**



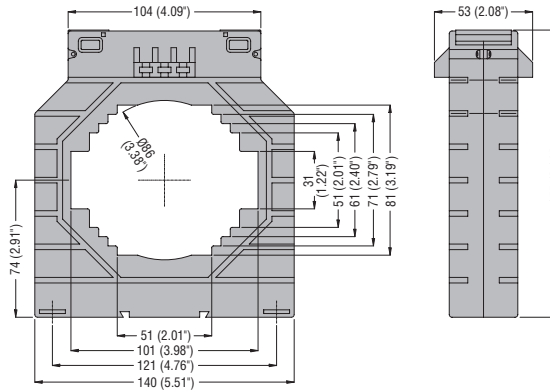
**DM35T...**



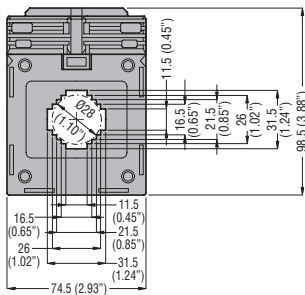
**DM37T...**



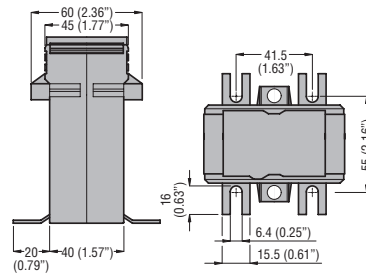
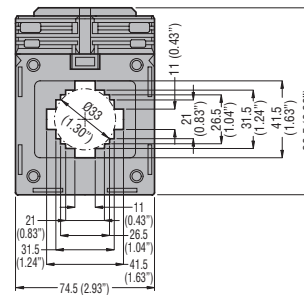
**DM4T...**



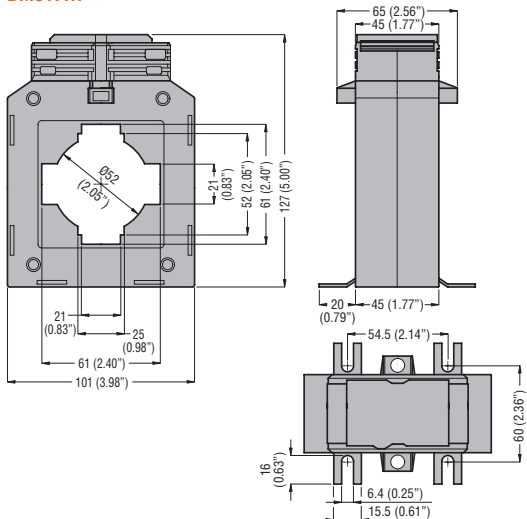
**DM1TP0060... - DM1TP0300**



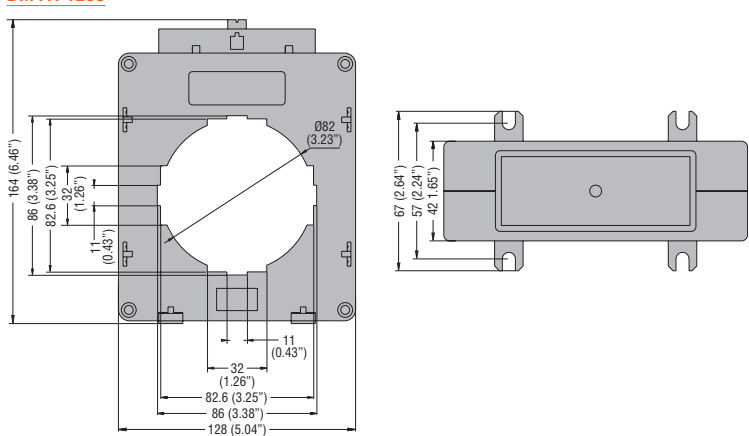
**DM1TP0400... - DM1TP0600**



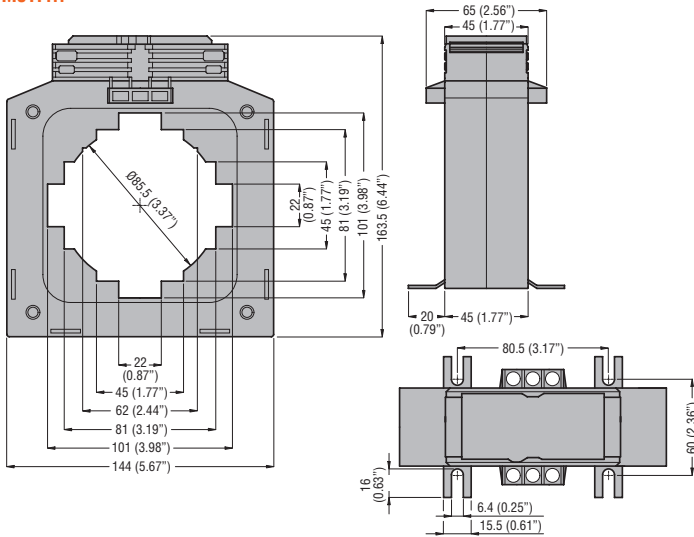
**DM3TP...**



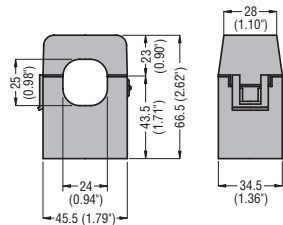
**DM4TP1200**



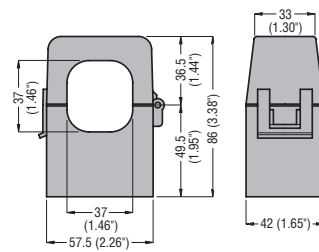
**DM5TP...**



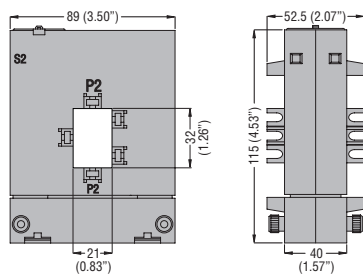
Compact prewired split-core  
**DM1TMA...**



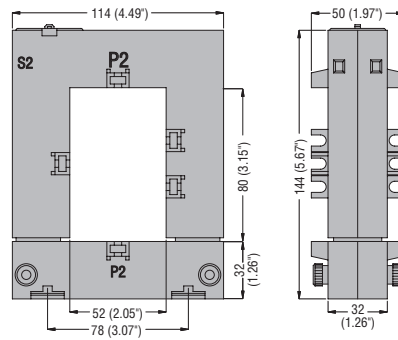
**DM2TMA...**



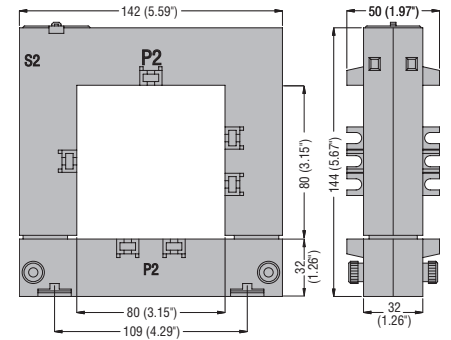
Split-core  
**DM0TA...**



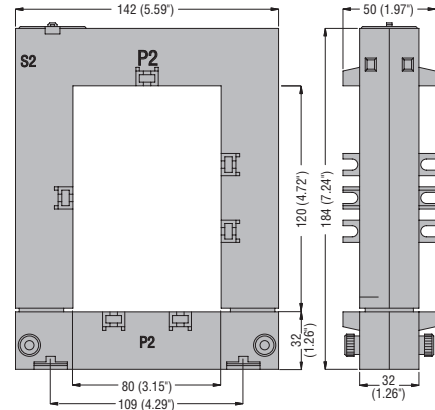
**DM1TA...**



**DM2TA...**



**DM3TA...**



**DM4TA...**

